

PROPOSED MITIGATION PLAN 10/30/2020

FEMA NOTE:
 LOCUS PROPERTY LIES WITHIN A FEMA
 ZONE AE 11 AS SHOWN ON FIRM
 PANEL 25023C0018J DATED
 7-17-2012.

SEE LOMR CASE NO. 15-01-0904P
 DATED 8-14-15

ZONING TABLE:
 FRONT SETBACK- 25'
 SIDE SETBACK - 15'
 REAR SETBACK - 15'
 MIN. AREA - 20,000 S.F.
 MIN. FRONTAGE - 125'
 MAX. HEIGHT - 35' OR 2.5 STYS.

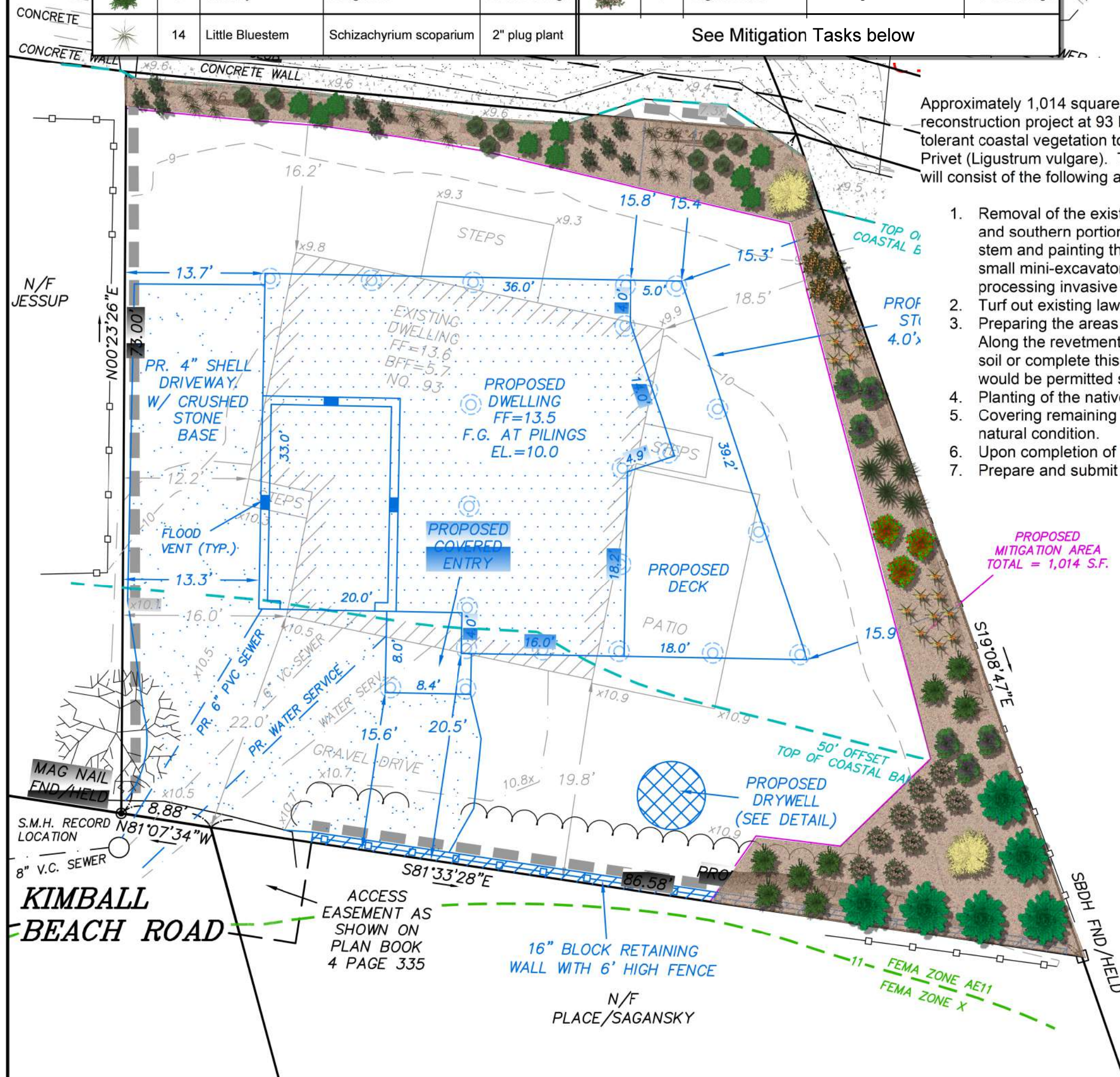
UTILITY CONSTRUCTION NOTE
 WATER, SEWER, ELECTRIC AND GAS
 UTILITY LOCATION AND INSTALLATION
 SHALL BE REVIEWED AND APPROVED
 BY THE INDIVIDUAL SERVICE PROVIDERS
 PRIOR TO COMMENCEMENT OF
 CONSTRUCTION ACTIVITIES.

Mitigation Plant Legend									
Symbol	Qty	Common	Botanical	Size	Symbol	Qty	Common	Botanical	Size
	6	Bayberry	Myrica Pensylvanica	1.5 to 2 ft. high		11	Lowbush Blueberry	Vaccinium angustifolium	1 gal.
	11	Bearberry	Arctostaphylos uva-ursi	1 gal.		15	Seaside Goldenrod	Solidago sempervirens	2" plug plant
	9	Common Juniper	Juniperus communis	3 gal.		2	Shadbush	Amelanchier canadensis	5 to 6 ft. high
	6	Eastern Red Cedar	Juniperus virginiana	5 to 6 ft. high		5	Sweet Fern	Comptonia peregrina	1 - 2 ft. high
	3	Highbush Blueberry	Vaccinium corymbosum	1.5 to 2 ft. high		5	Switch Grass	Panicum virgatum	1 gallon pot
	8	Inkberry	Ilex glabra	1.5 to 2 ft. high		9	Virginia Rose	Rosa virginiana	1.5 to 2 ft. high
	14	Little Bluestem	Schizachyrium scoparium	2" plug plant	See Mitigation Tasks below				

MITIGATION TASKS

Approximately 1,014 square feet of mitigation is proposed to accompany the proposed single-family home reconstruction project at 93 Kimball Beach Road. The proposed mitigation will consist of native salt tolerant coastal vegetation to replace areas of existing lawn and non-native invasive vegetation such as Privet (*Ligustrum vulgare*). The proposed planting scheme is shown on the Mitigation Sketch Plan and will consist of the following activities:

1. Removal of the existing non-native invasive plants. The existing Privet shrubs along the eastern and southern portions of the site will be removed by either cutting the plant at the base of the stem and painting the cut stem with herbicide, or removing the entire plant with root base using a small mini-excavator. All removed plant materials will be disposed of at a facility familiar with processing invasive vegetation.
2. Turf out existing lawn within the proposed mitigation footprints.
3. Preparing the areas for mitigation planting to include placement of new loam where necessary. Along the revetment, the mitigation area may require filter fabric along the concrete wall to hold soil or complete this portion of the mitigation planting after revetment repair activities, which would be permitted separately and is not part of this application.
4. Planting of the native saplings, shrubs, and herbaceous plants as shown.
5. Covering remaining portions of the mitigation area with natural wood chips to be maintained in a natural condition.
6. Upon completion of planting, prepare and submit a Mitigation Planting Completion Report.
7. Prepare and submit monitoring reports per the requirements of the Conservation Commission.



LOCATION OF UNDERGROUND UTILITIES IS APPROXIMATE ONLY, AND IS NOT WARRANTED TO BE CORRECT. UNDERGROUND UTILITIES ARE SHOWN BASED ON A VISUAL INSPECTION OF SURFACE OBSERVABLE FEATURES AND THE LIMITED RECORD INFORMATION AVAILABLE AS PROVIDED BY THE HINGHAM SEWER DEPARTMENT AND THE WEIR RIVER WATER SYSTEM. ADDITIONAL UTILITIES MAY EXIST WHICH ARE NOT INDICATED ON THESE PLANS. ALL EXISTING UTILITIES SHALL BE VERIFIED FOR SERVICE, SIZE, INVERT ELEVATION, LOCATIONS, ETC. PRIOR TO NEW CONNECTIONS TO OR RELOCATION OF SAME. CONTRACTOR MUST NOTIFY DIG-SAFE AT 1-888-344-7233 AT LEAST 72 HOURS PRIOR TO ANY CONSTRUCTION. NOTIFY THIS FIRM IN WRITING OF ANY AND ALL DISCREPANCIES PRIOR TO COMMENCING ANY WORK.