

Byrne Residence 27 Isaac Sprague Road, Hingham

HARDSCAPE AREAS:

Retaining/seat walls:

BASE 1 1/2" crushed stone footing 8-12" deep, 3-4' wide. **FACE:** Native New England Round field stone face with mortared stone core. **TOP:** 2" Thermal Bluestone or Like 14" wide

FACE Native New England Round field stone with mortared stone core
TOP: 2" Thermal Bluestone or Like 14" wide

Length	Height
12 LF 18" BS	
14 LF 18" BS	3.5'
48 LF 14" BS,	3.1'
12' LF 18" BS	

Wall 1: (Existing) add Bluestone cap

Wall 2: Portion double sided

Wall 3: Retaining wall along short side of pool and returning 12'

Steps

BASE 1 1/2" crushed stone footing 8-12" deep, 3-4' wide. **FACE:** Native New England Round field stone face with mortared stone core. **TOP:** 2" Thermal Bluestone or Like 14" wide

Riser Native New England Round field stone with mortared stone core
TOP: 2" Thermal Bluestone or Like 14" wide

Length	Height
90LF 12" BS	8"

S1: Landing steps (1 riser) 6' step at existing, (3 risers) various length 2 sided steps

Edging/ Patio surface
BASE

HYBRID Permeable: Geotextile over subgrade, 6-8" 1 1/2" crushed stone, 3-4" 3/4" crushed stone, 1" 1/4" chip stone setting bed. Surface to be Limestone with Permeable joint infill. Edging To be 3" x 7-12" tall random length granite set in concrete crib, exposed 3-4" on lawn side and flush with patio side.

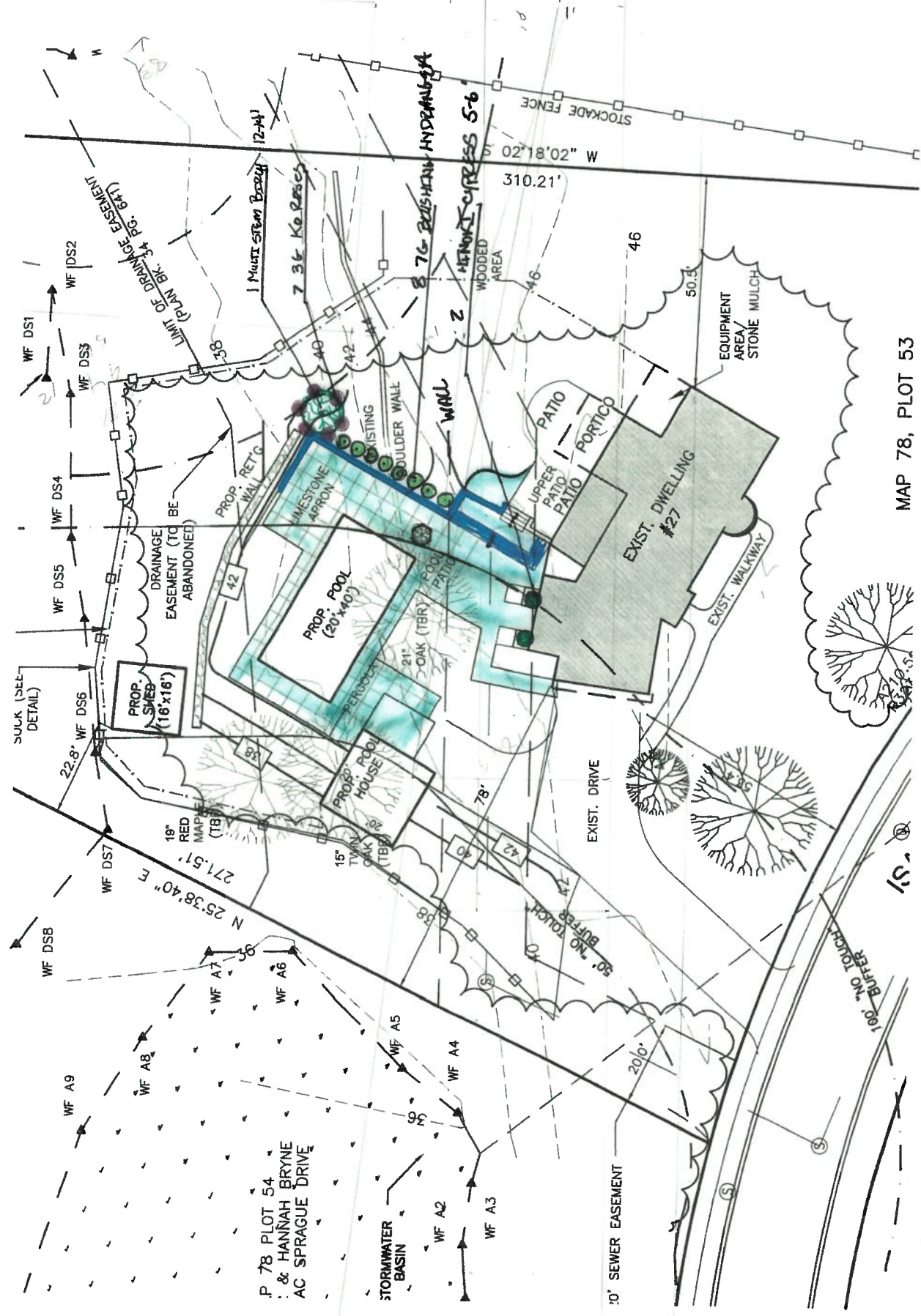
		Length	Area
Patio Surfaces	Unilock Limestone		
Border	Granite		
Pool Coping:	Bluestone or Like 14", Vault Aluminum of like	130	150 sq ft
	G1 Edging at house	51 LF	
	G2 Edging around Pool 2 sides	98 LF	
	Phase1 Patio		2160 Sq Ft
	Phase 2 Patio (pool house)		384 sq ft
	BBQ: Extend existing patio		80 sq ft
	Putting surface: permeable base prep, synthetic surface with sand infill		384 sq ft

Softscape:

Lawn 3-4" screened loam over power raked subsoil to blend new and existing grades. 6k sq ft

Formal Planting: (1) multi stem River Birch 12-14', (7) 3 gallon Knock out roses, (8) 7 gallon Blushing Hydrangeas, (2) 5-6' Hinokki Cypress

Mitigation Plantings: (2) 4" caliper Red Sunset Maple, (3) 3" caliper Red Oak.



MAP 78, PLOT 53