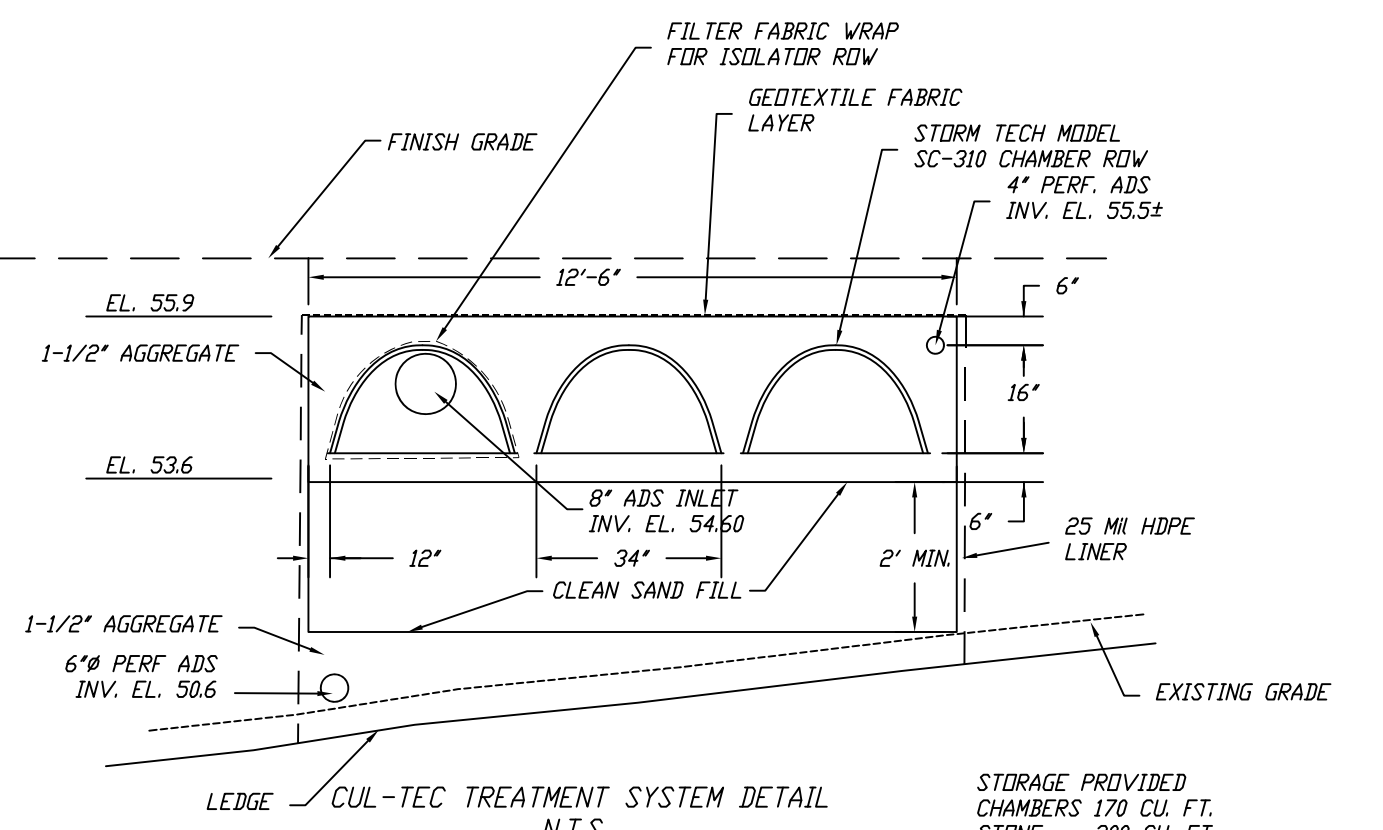


NOTES
 1. DETAILS NOT INDICATED ABOVE ARE TO BE SIMILAR TO THOSE SHOWN ON M.D.P.W. STD. 201.20.201.3.0
 2. FACE OF PIPE FLUSH OR NOT TO PROJECT MORE THAN 4" FROM FACE OF WALL ALONG CENTERLINE OF PIPE.
 3. FOR DESCRIPTION, MATERIAL AND CONSTRUCTION METHOD, SEE SPECIFICATIONS.



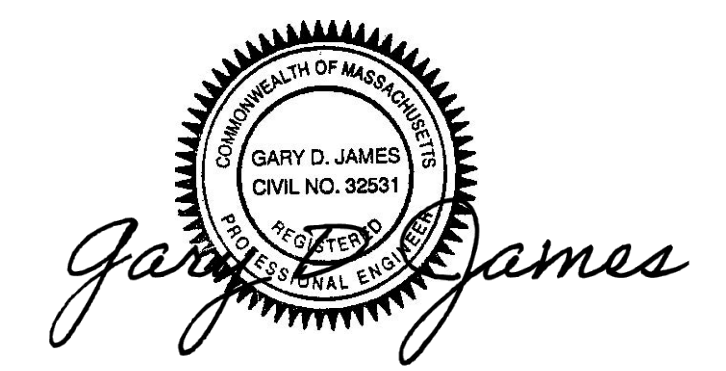
NOTE:
 ALL STORM WATER SUBSURFACE INFILTRATION SYSTEMS SHALL BE MAINTAINED IN STRICT ACCORDANCE WITH THE OPERATION & MAINTENANCE MANUAL

STORAGE PROVIDED
 CHAMBERS 170 CU. FT.
 STONE 200 CU. FT.
 TOTAL 370 CU. FT.

IMPERVIOUS AREA
 HOUSE 3675
 SIDEWALK 282
 DRIVEWAY 2304
 TOTAL 6,461 SQ. FT.
 WATER QUALITY VOLUME 269 CU. FT. @5%

APPROVED BY THE PLANNING BOARD

DATE APPROVED: _____



OWNER/APPLICANT

CANTERBURY STREET, LLC
 15 LEWIS COURT
 HINGHAM, MA 02043

UTILITY PLAN
 PLAN OF LAND
 AT
 111 WEIR STREET
 HINGHAM, MA

SCALE: 1"=20' DATE: March 06, 2020

JAMES ENGINEERING, INC.
 125 GREAT ROCK ROAD
 HANOVER, MASS. 02339
 TEL: 1-(781)-878-1795

email: jameseng125_gary@msn.com



SCALE IN FEET

REV.#	DATE	DESCRIPTION
1	04/25/20	ADDED METER PIT
2	06/05/20	SHOWED TREE REMOVAL
3	07/05/20	RESPONSE TO CON COMM

WATER NOTES:
 1. METER PIT SHALL BE MODEL PDVV-486-20-00 NL METER PIT AS MANUFACTURED BY THE FORD METER BOX COMPANY, INC. SET FOR 5/8" METER.