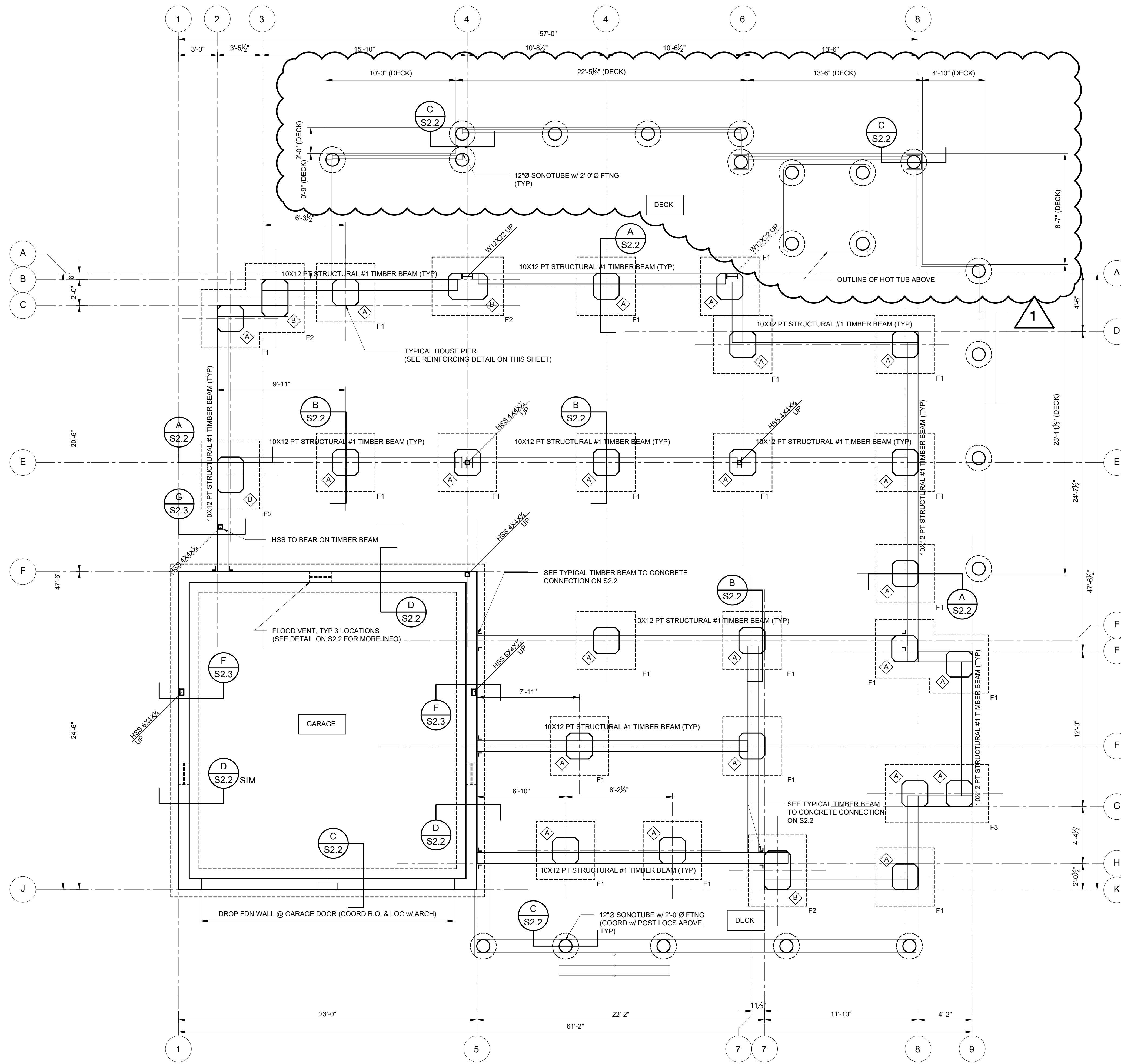
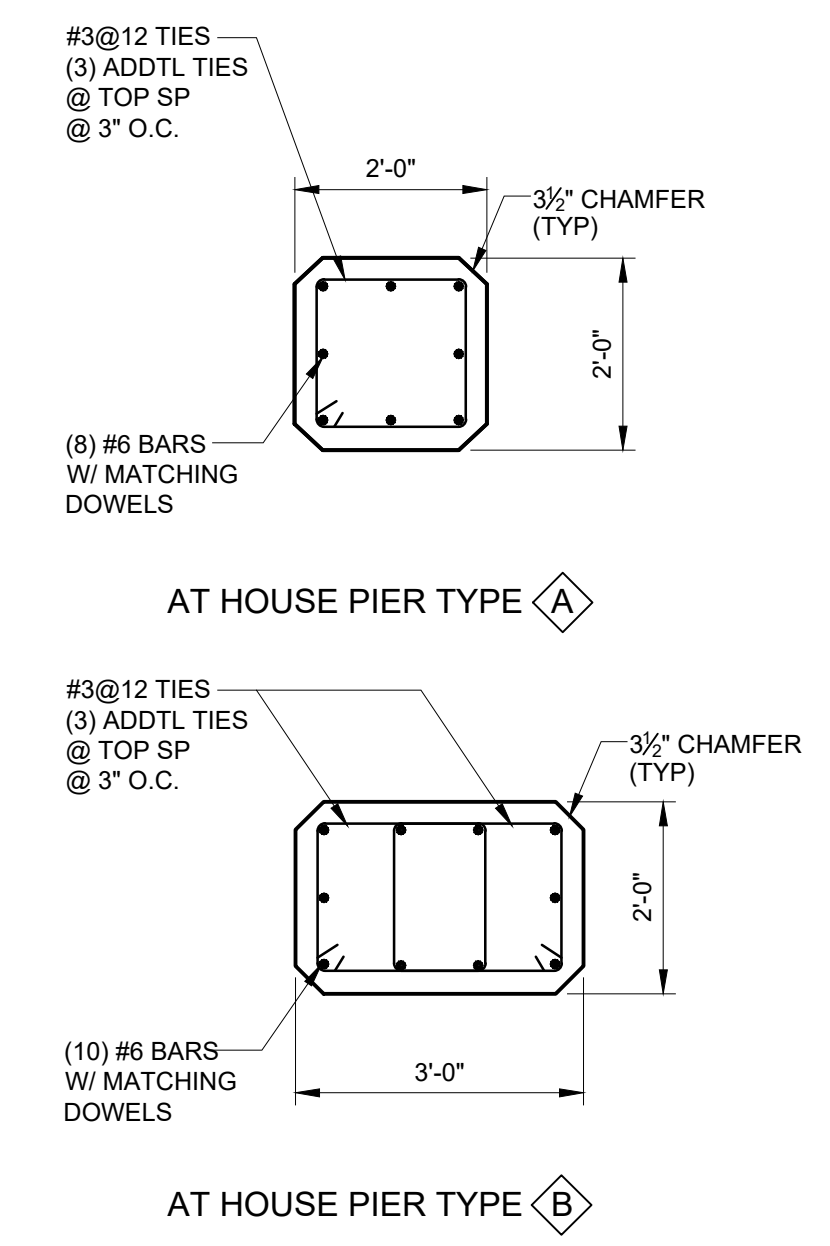


C:\USERS\BRIAN\DESKTOP\RYAN CORONA\HCD - SHARP



**FOUNDATION PLAN**  
SCALE: 1/4" = 1'-0"

- NOTES:**
- FOR GENERAL NOTES SEE S1.1.
  - FINAL DIMENSIONAL CONTROL REMAINS WITH THE ARCHITECT. CONTRACTOR TO COORDINATE WITH FINAL ARCHITECTURAL PLANS.
  - STEEL COLUMNS TO ALIGN WITH CENTERLINE OF BEAM ABOVE AND FIT IN WALL, COORDINATE WITH FINAL ARCHITECTURAL PLANS.
  - LOCATE FOUNDATION ELEMENTS PER APPROVED CIVIL/SITE PLANS
  - FOR TOP OF CONCRETE ELEVATIONS REFER TO CIVIL SITE DRAWINGS AND COORDINATE WITH ARCHITECT & OWNER.
  - COORDINATE LOCATION OF PIERS, FOOTINGS AND COLUMNS WITH ARCHITECTURAL PLANS SO THAT COLUMNS AND POSTS ALIGN.
  - RIVERMOOR ENGINEERING SUGGESTS THAT A GEOTECHNICAL INVESTIGATION BE DONE PRIOR TO CONSTRUCTION.
  - ALL STEEL POSTS BASE CONNECTIONS TO BEAR DIRECTLY ON CONCRETE UNLESS NOTED OTHERWISE.



**DETAIL**  
SCALE: 1/2" = 1'-0"

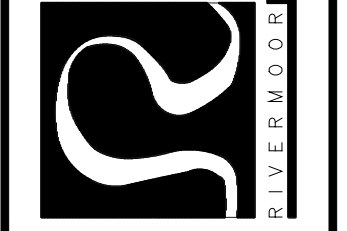
FOOTING SCHEDULE		
NO.	SIZE (LENGTH X WIDTH X THK)	REINFORCING
F-1	4'-6" X 4'-6" X 1'-4"	(4)#5 BOTT E.W.
F-2	4'-6" X 5'-6" X 1'-4"	#5 @ 8 OC BOTT EW
F-3	4'-6" X 8'-0" X 1'-4"	#5 @ 10 OC BOTT EW

RS	DATE	ACTION	DESCRIPTION	ID
1	4/3/2020	REVISE	DECK LAYOUT	

**Project Title:**  
Sharp Residence  
2 Beach Lane  
Hingham, MA

**FOUNDATION PLAN**

RIVERMOOR ENGINEERING, LLC  
146 FRONT STREET, SUITE 211  
SCITUATE, MASSACHUSETTS 02066  
TEL: (781) 545-2848  
FAX: (781) 544-7729



DATE: 3-18-2020  
DESIGNED BY: RIS  
DRAWN BY: RIS  
CHECKED BY: PJF

DRAWING NO.  
**S2.1**  
20-008